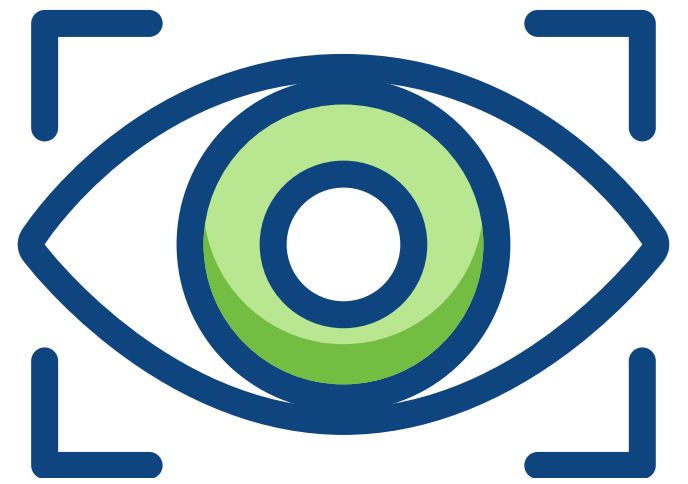


Diabetic Eye Screening



All people aged 12 and over with diabetes (type 1 and 2) are offered annual eye screening appointments

The only exceptions are people with diabetic eye disease who are already under the care of an ophthalmology specialist. The screening test usually takes around 30 minutes. Screening does not replace regular eye examinations and it is important to attend both



www.nhs.uk/tests-and-treatments/diabetic-eye-screening

If you think you're due to go for diabetic eye screening and you've not had a letter in the post, contact either your GP practice or your local eye screening service

Doncaster Diabetic Eye Screening Programme

Diabetes & Endocrine Centre, Doncaster Royal Infirmary, Doncaster, DN2 5LT

Phone: 01302 642596 / 642597 / 642598



Doncaster South
Primary Care Network